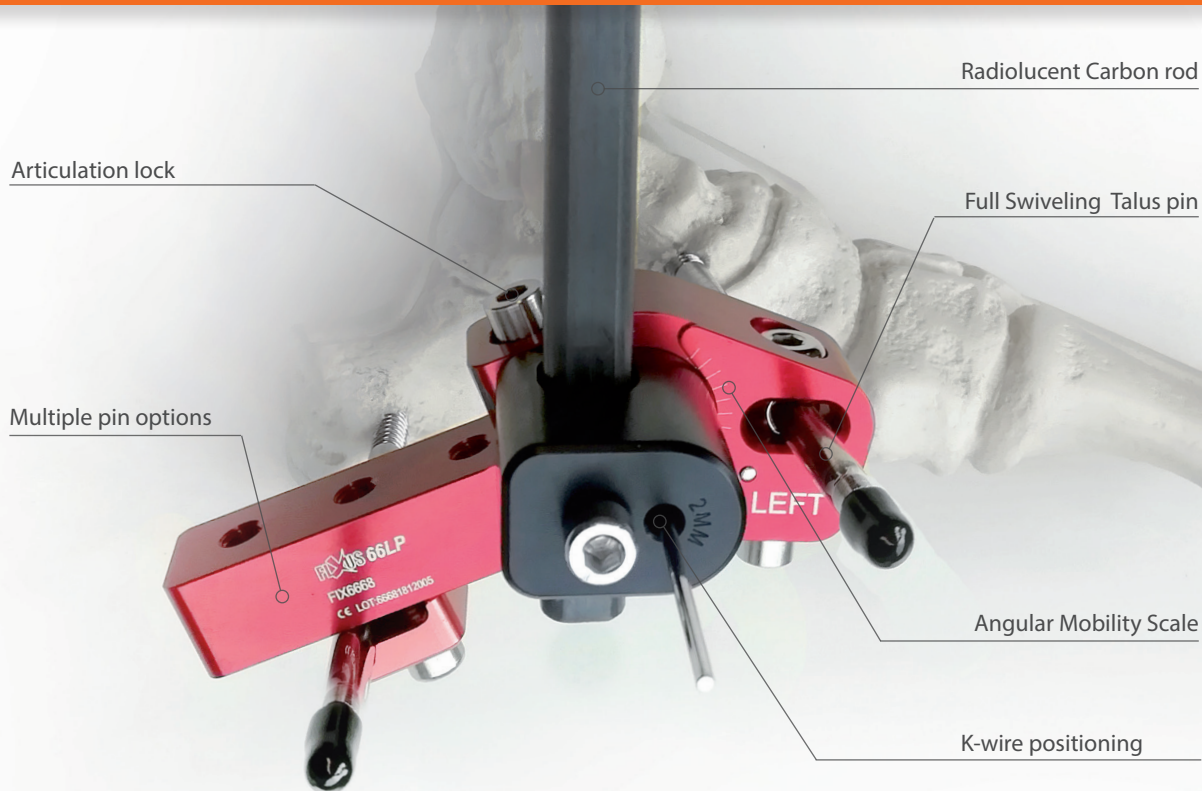


# FIXUS66 LOW PILON



## Designed for visibility and movement

### FLEXIBILITY

The FIXUS66 Low Pilon fixator is designed specially for distal tibia applications with a short to medium long treatment period. Specially for inter-articular and unstable tibial pilon fractures.

For flexible pin placement, the FIXUS66 LP hinge has the possibility for the talus pin to swivel for optimal placement in the talusneck. In the calcaneus it is possible to use different types and quantities of pinholders for optimal pinplacement.

The Low Pilon is modular in use with the FIXUS66 Trauma systems, which allows for high flexibility & stability in placement and allowing for adjustment during surgery for optimal fracture allignment.

Combine different lengths of FIXUS66 rods, the CD unit or hybrid rings and the LP is ready to treat any unexpected trauma case.

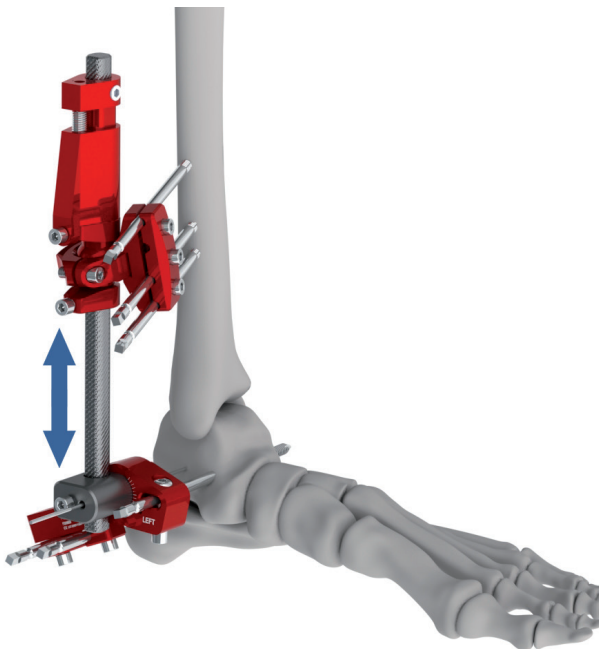


Full Articulation possible

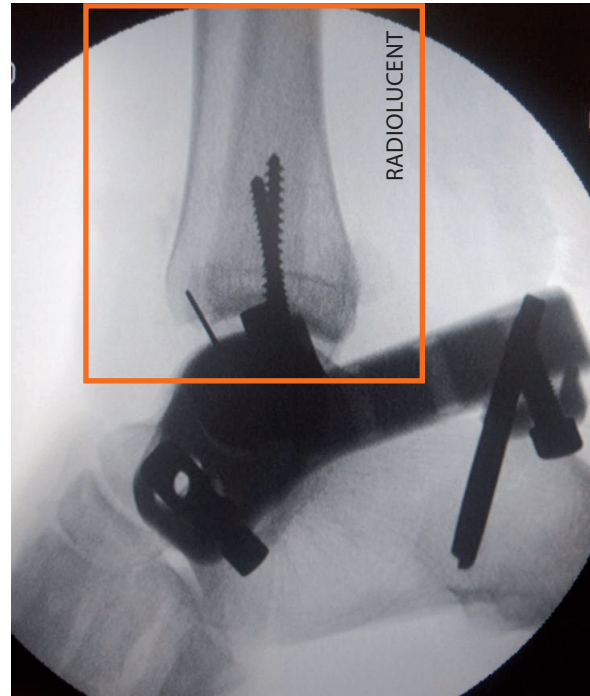
### RADIOLUCENT

The FIXUS66LP is connected to the lightweight, stiff and radiolucent FIXUS66 carbon fibre rod, ensuring maximal joint/fracture visualization.

The flexibility of the system allows the surgeon free movement to access the distal tibia and ankle-joint for further manipulation.



CD unit for compression or distraction of joint/fracture



### COMPRESSION/DISTRACTION

The FIXUS66 CD device allows for joint and fracture distraction/fusion. Distraction and/or compression can be performed at any place connecting to a base assembly. The fixator allows for the use of multiple CD Devices in one setup and easy intraoperative changes.

### FEATURES AND BENEFITS

- Dedicated trauma Low-Pilon clamp
- Radiolucent at fracture point/ankle joint
- Allows for early joint movement
- Angular scale to review articulation mobility
- Quick, easy placement with Kwire
- Quick alignment on the articulation axis
- Ankle articulation
- Lateral and Medial placement
- Angular scale to view movement
- Option for multiple pins in the calcaneus

### PRODUCTS

Description	Art. code
FIXUS66 Low Pilon hinge	FIX66300N
FIXUS66 Base assembly	FIX66200B
FIXUS66 CD Device	FIX66200F

YOUR DISTRIBUTOR:

