

FIXUS66 HYBRID



Designed to keep hybrid fixation easy

PRECISION

The FIXUS66 Hybrid Fixator was designed to provide maximum support for the fracture in a simple device, capable of dealing with simple and complex trauma cases.

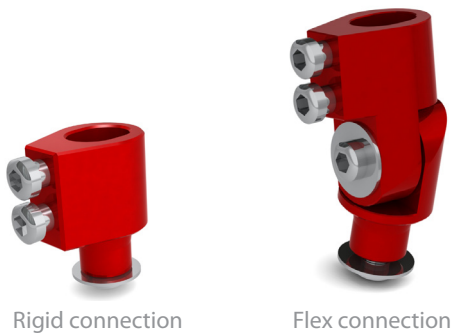
Hybrid fixation is mostly used for the application of the proximal and distal area of the long bones. The area of the epiphysis/metaphysis does not have a high success rate with unilateral fixation, in trauma, due to high infection rate.

Using a hybrid configuration with K-wires, infection danger is less and direct reduction is possible with Olive K-wires.

Due to the placement of small K-wires on the (2/3) ring early movement of the knee or ankle can be possible avoiding or reducing joint stiffness. Combining the benefits of ring fixation with K-wires with a unilateral fixator makes Hybrid fixation for a good option.

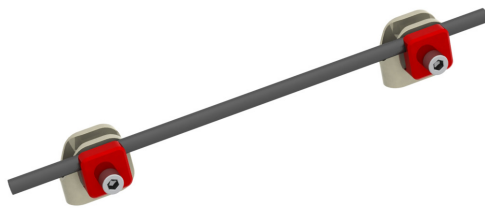
Using the FIXUS66 Hybrid gives the benefits of stabilizing the epiphysis area with crossing wires, and the diaphysis area with the FIXUS66 using its multi-plane placement possibility.

To make the whole construct even more stable around the epiphysis area, additional pins or delta's can be placement for optimal stability.



Rigid connection

Flex connection



Delta connection

FEATURES AND BENEFITS

- Unlimited possibilities, and rapid assembly
- 2/3 and 1/3 rings for patient comfort
- Full ring assembly for maximum stability
- Allows dedicated fixation for FIXUS66
- Minimal damage to blood supply and soft tissue
- Accepts K-wires and Pins
- Minimal parts and Instruments for quick assembly



2/3 and 1/3 rings for individual or combined use

The FIXUS66 Hybrid rings are available in 1/3 and 2/3 rings, which can be combined to one full ring. The way unique connection of the 1/3 and 2/3 ring connect make for a solid full ring for maximum stability.

The rings have dedicated attachment areas for the unilateral fixator, and dedicated holes for Pin or K-wire placement. The rings are designed so that an optimal spread of 90 degree of placement can be achieved.

PRODUCTS

Description	Art. code
FIXUS66 mono lateral	FIX66100A
FIXUS66 200 2/3 Ring	FIX55200C
FIXUS66 200 1/3 Ring	FIX55200D
FIXUS66 150 2/3 Ring	FIX55150C
FIXUS66 150 1/3 Ring	FIX55150D
FIXUS66 Rigid Hybrid connection	FIX66300A
FIXUS66 Flex Hybrid connection	FIX66300B

YOUR DISTRIBUTOR:

